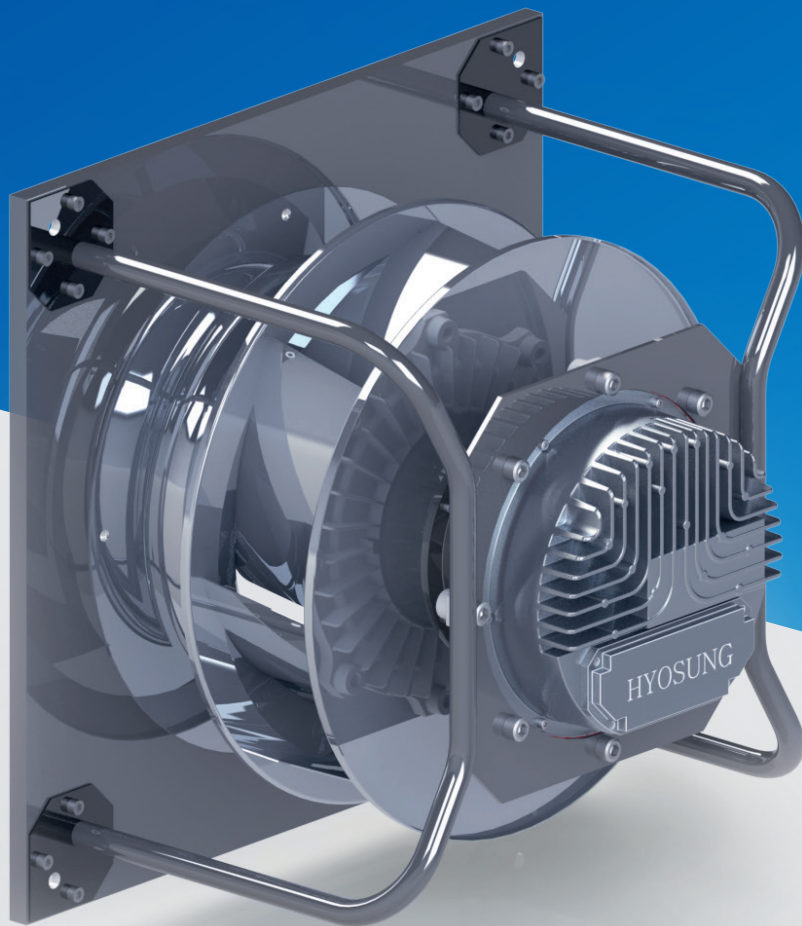


HYOSUNG EC Fan Prototype

- 인넷콘 포함
- 박스 프레임 / 마운팅 브라켓 옵션사항
- CE / 고효율기자재인증



기본 사양

- HVAC / AHU에 적합한 디자인
- 플러그팬
- 플래넬팬
- 임펠러 사이즈 315~630mm

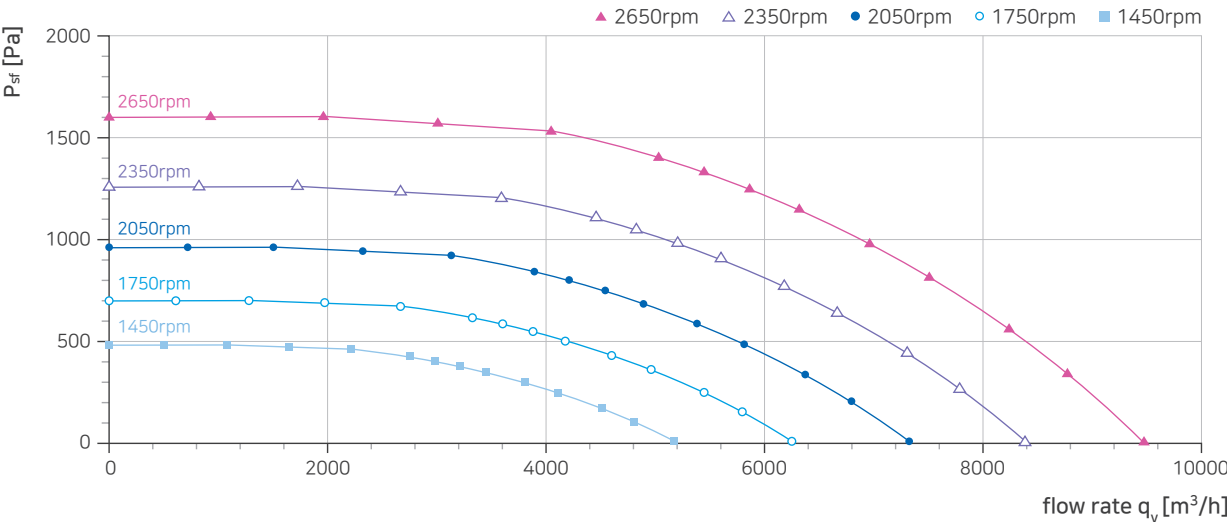
기술적 특징

- 안정된 정압효율
- 알루미늄 재질 팬 적용
- 사용 온도 범위 -20°C ~ +60°C (-4°F to 140°F)
- 반복적인 피로시험을 통한 신뢰성 확보
- DIN ISO 21940-11에 따른 발란스 G6.3 이하 유지

400 / 450

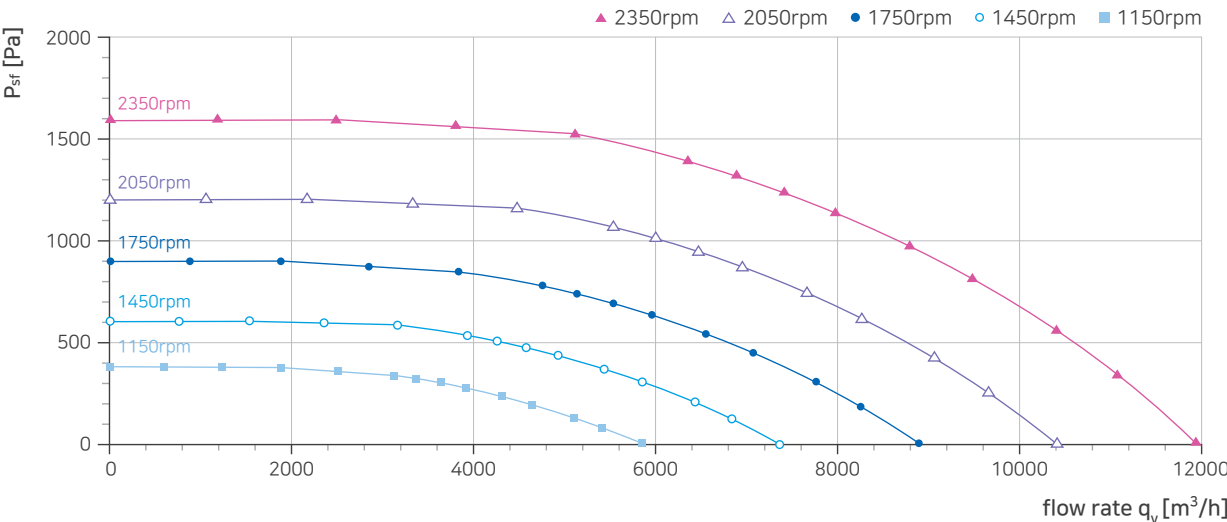
인넷콘 포함
박스 프레임 / 마운팅 브라켓 옵션사항
CE / 고효율기자재인증

400



Speed (rpm)	Flow Rate (m³/h)	Static pressure (Pa)	Nominal Voltage (VAC)	Input Power (W)	Current (A)
2650	6312	1150	380	3167	5.4
2350	5597	905	380	2263	3.9
2050	4883	689	380	1543	2.8
1750	4168	502	380	999	1.9
1450	3454	345	380	603	1.2

450

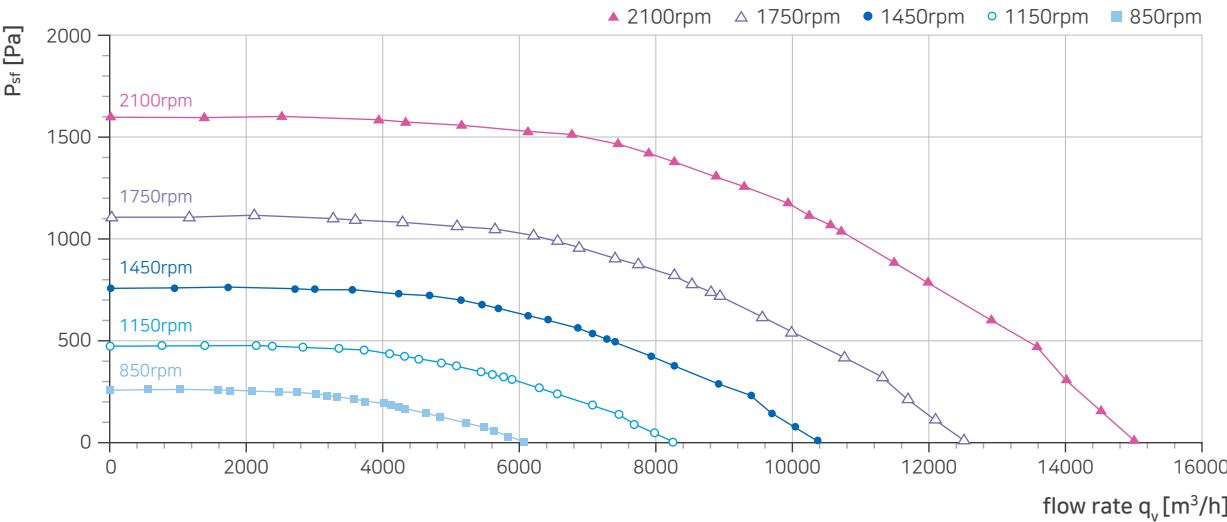


Speed (rpm)	Flow Rate (m³/h)	Static pressure (Pa)	Nominal Voltage (VAC)	Input Power (W)	Current (A)
2350	7969	1145	380	3914	6.5
2050	6952	872	380	2644	4.5
1750	5935	636	380	1686	3
1450	4917	437	380	998	1.9
1150	3900	275	380	534	1.1

500 / 560

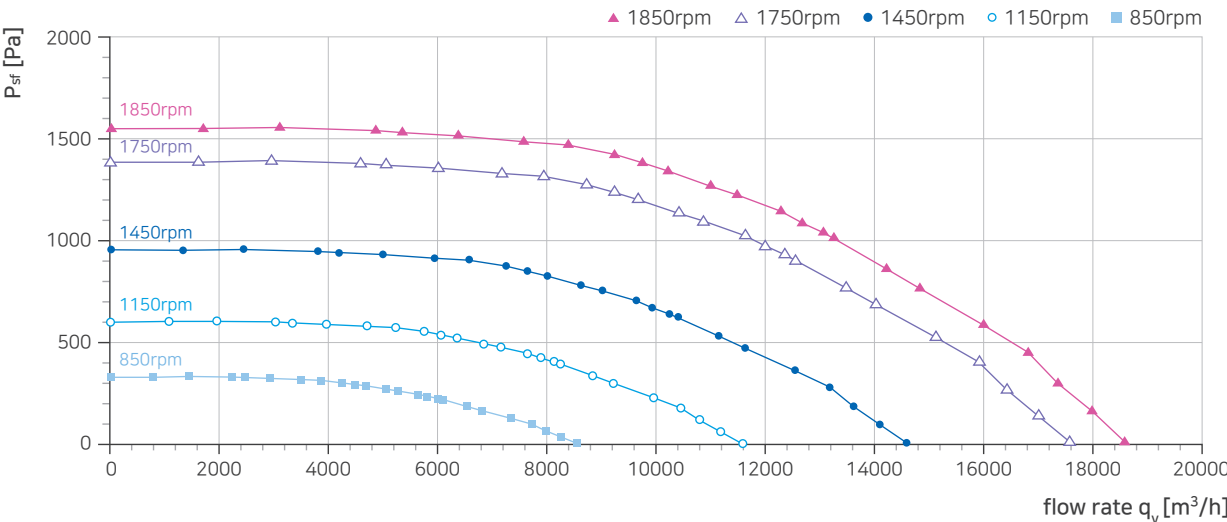
인넷콘 포함
박스 프레임 / 마운팅 브라켓 옵션사항
CE / 고효율기자재인증

500



Speed (rpm)	Flow Rate (m³/h)	Static pressure (Pa)	Nominal Voltage (VAC)	Input Power (W)	Current (A)
2100	9921	1177	380	4910	8.0
1750	8268	818	380	2918	4.9
1450	6850	562	380	1730	3.1
1150	5433	354	380	696	1.4
850	3997	191	380	421	1.0

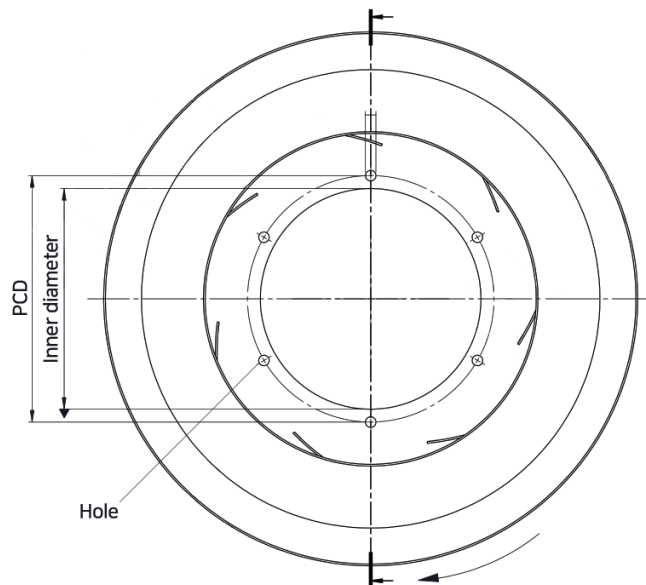
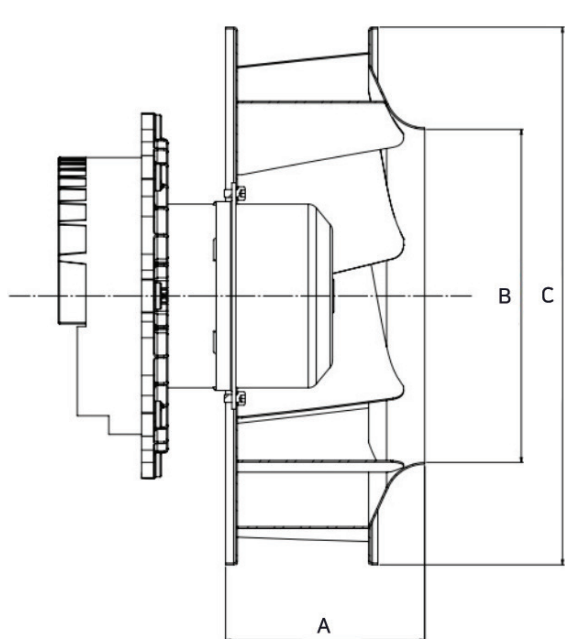
560



Speed (rpm)	Flow Rate (m³/h)	Static pressure (Pa)	Nominal Voltage (VAC)	Input Power (W)	Current (A)
1850	12279	1145	380	5853	9.6
1750	11616	1025	380	4984	8.2
1450	9624	705	380	2913	4.9
1150	7633	444	380	1522	2.7
850	5636	242	380	670	1.4

Dimension

인넷콘 포함
박스 프레임 / 마운팅 브라켓 옵션사항
CE / 고효율기자재인증



size	A	B	C	Inner diameter	Hole	PCD
315	128.9±1.5	Ø222.1 ⁺²	Ø360±1.6	Ø138.1 ^{+0.2}	Ø6.5(6x)	Ø154±0.2
355	143.9±2	Ø250.3 ^{+2.3}	Ø404±1.6	Ø138.1 ^{+0.2}	Ø6.5(6x)	Ø154±0.2
400	161.6±2	Ø282 ^{+2.5}	Ø455±1.8	Ø188 ^{+0.2}	Ø9(6x)	Ø210±0.2
450	181.7±2	Ø317.3 ^{+2.8}	Ø505±1.8	Ø188 ^{+0.2}	Ø9(6x)	Ø210±0.2
500	202.5±2	Ø352.5 ^{+3.2}	Ø566±2	Ø188.1 ^{+0.2}	Ø9(6x)	Ø210±0.2
560	230.7±2	Ø394.8 ^{+3.6}	Ø636±2	Ø188.1 ^{+0.2}	Ø9(6x)	Ø210±0.2
630	259.3±2.5	Ø444.2 ^{+4.0}	Ø716±2	Ø253.1 ^{+0.2}	Ø9(8x)	Ø290±0.2

MEMO

.....

.....

.....

.....

.....

.....

.....

.....

